



FORD F-SERIES SUPER DUTY®

**2022 CHASSIS CAB**



# THE SUPER DUTY OF CHASSIS CABS.



Your job is tough. Working hard, shift after shift, around the clock. Rest assured, from F-350 to F-600, F-Series Super Duty® Chassis Cab trucks will be right there with you. Robust engine choices include an available 6.2L or 7.3L V8 gas, as well as our available 6.7L Power Stroke® V8 Turbo Diesel. Each is paired with a 10-speed TorqShift® automatic transmission calibrated for heavy-duty work. Available Ford Co-Pilot360™ Technology<sup>1</sup> helps supplement your driving skills, while FordPass™ Connect<sup>2</sup> with Wi-Fi hotspot capability<sup>3</sup> helps keep you – and your crew – in touch. As America's best-selling trucks for 44 years,<sup>4</sup> Ford F-Series® is in it for the long haul. For the pride of a job well done. For the workers who never rest.

**MAX. AVAILABLE GCWR**  
**43,000 LBS.**

F-600 WITH AVAILABLE  
6.7L POWER STROKE V8 TURBO DIESEL<sup>5</sup>

**MAX. AVAILABLE FRONT GAWR**  
**7,500 LBS.**

F-600, AND F-450/F-550 WITH AVAILABLE  
EXTRA-HEAVY-DUTY FRONT-END  
SUSPENSION PACKAGE

**BEST MAX. AVAILABLE  
5TH-WHEEL TOWING<sup>6</sup>**  
**34,500 LBS.**

F-600 4x2 60" CA WITH AVAILABLE  
6.7L POWER STROKE V8 TURBO DIESEL<sup>5</sup>

**MAX. AVAILABLE PAYLOAD<sup>7</sup>**  
**15,090 LBS.**

F-600 4x2 60" CA  
WITH 7.3L V8 ENGINE<sup>5</sup>

**CLASS 6 CAPABILITY**  
**F-600**  
IN A CLASS 5 PACKAGE

**F-550 XL REGULAR CAB 4x4.** Oxford White. 6.7L Power Stroke diesel engine. Available and aftermarket equipment. (Max. Payload of 11,629 lbs. and Max. 5th-Wheel Towing of 23,600 lbs. when properly configured with 60" CA and available Payload Plus Upgrade Package.)

Vehicle imagery throughout this brochure may be computer-generated and may include available and aftermarket equipment.

**1.** Driver-assist features are supplemental and do not replace the driver's attention, judgment and need to control the vehicle. It does not replace safe driving. See owner's manual for details and limitations. **2.** FordPass Connect, the FordPass App, and complimentary Connected Service are required for remote features (see FordPass Terms for details). Connected service and features depend on compatible AT&T network availability. Evolving technology/cellular networks/vehicle capability may limit functionality and prevent operation of connected features. Connected service excludes Wi-Fi hotspot. **3.** Wi-Fi hotspot includes complimentary wireless data trial that begins upon AT&T activation and expires at the end of 3 months or when 3GB of data is used, whichever comes first. To activate, go to [www.att.com/ford](http://www.att.com/ford). **4.** Best-selling trucks for 44 years based on 1977–2020 CY total sales. **5.** Maximum capability configuration vehicles not shown. **6.** Max. towing varies based on cargo, vehicle configuration, accessories and number of passengers. **7.** Max. payload varies and is based on accessories and vehicle configuration. See label on door jamb for carrying capacity of a specific vehicle.

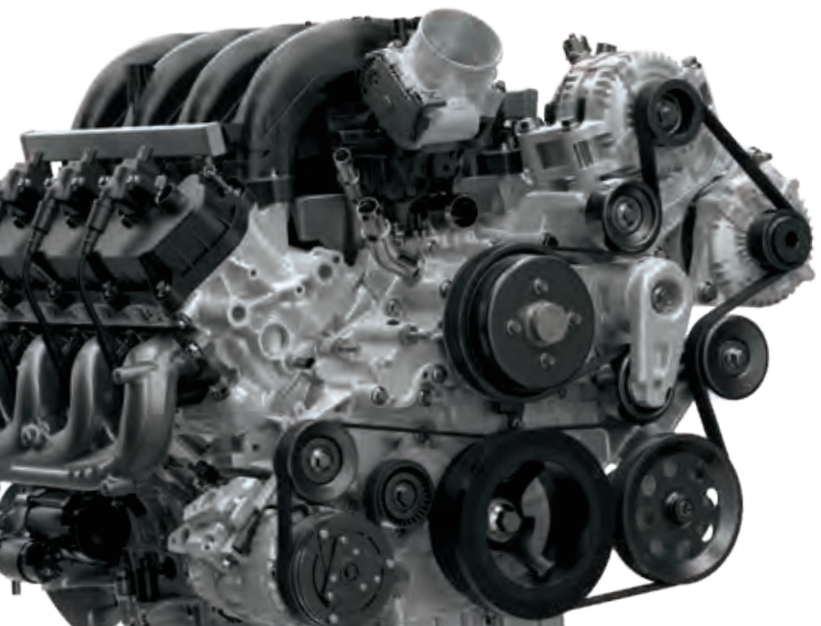
Payload and towing are independent attributes and may not be achieved simultaneously.

BUILT *Ford* PROUD



# PICK YOUR POWER.

Both Super Duty® Chassis Cab truck gas engines – the 6.2L V8 (F-350) and the available 7.3L V8 (F-350/F-450/F-550/F-600) – are backed by years of commercial engine expertise to help you power through the tough work you face every day. For heavy-duty diesel performance, our available 6.7L Power Stroke® V8 Turbo Diesel (F-350/F-450/F-550/F-600) delivers 825 lb.-ft. of ready torque to help you move mountains of work. All 3 powerplants, plus the TorqShift® 10-speed automatic transmission they're paired with, are engineered and assembled by Ford. So whichever Built Ford Tough® powertrain you choose, rest assured that it's designed to work seamlessly with chassis components and vehicle calibrations.



## **7.3L 2-VALVE V8 GAS**

350 MAX. HORSEPOWER | 468 LB.-FT. MAX. TORQUE

Built from the ground up as a dedicated truck engine, this beast is the largest displacement V8 engine in the class! To help maintain optimum engine performance, its stout design features include: cast-iron engine block construction, a forged-steel crankshaft, carbon-nitrided needle bearings in the valvetrain, robust pistons and ring packs with anti-wear coatings, piston cooling jets, and a variable-displacement oil pump located in the pan. Tough lives here.

## **6.7L POWER STROKE V8 TURBO DIESEL**

330 MAX. HORSEPOWER | 825 LB.-FT. MAX. TORQUE

A 36,000-psi fuel-injection system helps it optimize combustion and provide excellent throttle response. Forged-steel pistons provide high firing pressure capability and low friction for hardworking durability. A turbocharger with fully electronic vane actuator helps cold-weather performance, while the grille design ensures plenty of airflow to help keep things cool. Which this diesel has done for years – stay calm under pressure.

## **6.2L 2-VALVE V8 GAS**

385 MAX. HORSEPOWER | 430 LB.-FT. MAX. TORQUE

By supplying working power throughout the rpm range, the 6.2L V8 delivers an impressive combination of driveability, hauling and towing performance. Dual-equal variable cam timing phases the intake- and exhaust-valve opening and closing events simultaneously to help optimize low-end torque and peak horsepower. And flex-fuel (FFV) capability allows the 6.2L to operate on E85 fuel, unleaded gasoline or any combination of the two in the same fuel tank.



**F-450 XL CREW CAB 4x4.** Oxford White. 7.3L gas engine. Available and aftermarket equipment.

1. Class 3-5 Chassis Cabs.

Horsepower and torque are independent attributes and may not be achieved simultaneously.



# TAKE ADVANTAGE OF ALL THAT POWER.



**F-600 XL REGULAR CAB 4x4.** Oxford White. 6.7L Power Stroke® diesel engine. Available and aftermarket upfit equipment. (Max. 5th-Wheel Towing of 34,000 lbs., Max. Conventional Towing of 18,500 lbs., Max. Payload of 14,015 lbs., Max. GVWR of 22,000 lbs., and Max. GCWR of 43,000 lbs., when properly configured with 60" CA.)

**1.** Stationary-mode PTO max. torque ratings: 300 lb.-ft. on diesel, 250 lb.-ft. on gas. Mobile-mode PTO max. torque ratings: 200 lb.-ft. on diesel, 125 lb.-ft. on 7.3L gas, and 115 lb.-ft. on 6.2L gas. **2.** Max. towing varies based on cargo, vehicle configuration, accessories and number of passengers. **3.** Max. payload varies and is based on accessories and vehicle configuration. See label on door jamb for carrying capacity of a specific vehicle.

When properly configured with available equipment. See Dimensions/Weights and Towing charts in the Specifications section for maximum ratings by configuration. Maximum capability configuration vehicles not shown. Payload and towing are independent attributes and may not be achieved simultaneously.



## TORQSHIFT® 10-SPEED AUTOMATIC TRANSMISSION

In the unforgiving work conditions where Super Duty® Chassis Cab trucks excel, smooth and efficient power delivery provides the strength and capability to get the job done. Our robust TorqShift 10-speed automatic, standard with all 3 engines, is engineered for durability and calibrated specifically for heavy-duty work. With a tall 4.615 1st-gear ratio producing outstanding starting torque, the 10-speed also offers a wide range of overdrive gears. An advanced hydraulic control system supplies smooth, fast shifts and exceptional gear selection. Five Selectable Drive Modes allow drivers to optimize how Chassis Cab truck performs in a given driving condition (Tow/Haul, Deep Snow/Sand, Slippery, Normal and Eco).



## LIVE-DRIVE POWER TAKEOFF (PTO) PROVISION

With stationary- and mobile-mode operations, the available PTO provision allows Chassis Cab truck to power lift buckets, sprayer pumps, generators, snow plows and more. Directly linked to the engine crankshaft, the PTO output gear delivers power anytime the engine is running – whether the vehicle is moving or not. The available diesel powertrain includes split-shaft capability, which allows operation of multiple accessories at the same time when the truck is stopped. A sturdy 10-bolt architecture helps keep your PTO securely in place.

## 4 LEVELS OF SUPER DUTY CAPABILITY

Available	F-350	F-450	F-550	F-600
Max. 5th-Wheel Towing <sup>2</sup>	24,700 lbs.	26,600 lbs.	31,600 lbs.	34,500 lbs.
Max. Conventional Towing <sup>2</sup>	17,500 lbs.	17,500 lbs.	18,500 lbs.	18,500 lbs.
Max. Payload <sup>3</sup>	7,940 lbs.	9,850 lbs.	12,750 lbs.	15,090 lbs.
Max. GVWR	14,000 lbs.	16,500 lbs.	19,500 lbs.	22,000 lbs.
Max. GCWR	32,500 lbs.	35,000 lbs.	40,000 lbs.	43,000 lbs.
Max. Front GAWR	5,300 lbs. (4x2) 5,990 lbs. (4x4)	7,500 lbs.	7,500 lbs.	7,500 lbs.
Drivetrains	Single Rear Wheel (SRW) or Dual Rear Wheel (DRW) 4x2 or 4x4	DRW 4x2 or 4x4	DRW 4x2 or 4x4	DRW 4x2 or 4x4
Cab Types	Regular Cab, SuperCab™ Crew Cab	Regular Cab, SuperCab, Crew Cab	Regular Cab, SuperCab, Crew Cab	Regular Cab
Trim Levels	XL, XLT, LARIAT™	XL, XLT, LARIAT	XL, XLT, LARIAT	XL, XLT



# DESIGNED TO HELP YOU STAY CONNECTED.

With 3 different SYNC® systems available! Super Duty® Chassis Cab trucks have your connectivity needs covered. Using your voice, you can make and take calls, listen to your favorite music and, using SYNC AppLink®, control your favorite smartphone apps on your paired smartphone or other mobile device.<sup>2</sup>

With SYNC 3 and newly available SYNC 4, you can also enjoy available compatibility with Apple CarPlay<sup>®3</sup> for your iPhone® or Android Auto™<sup>3</sup> for your Android™ phone. Plus, standard USB ports help ensure that all your devices are charged and ready to go when you reach your destination.



SCAN TO LEARN MORE  
or visit [Ford.com/SYNC](https://Ford.com/SYNC)  
Data rates may apply.



## SYNC

- 4.2" LCD screen
- SYNC AppLink
- 1 smart-charging USB port
- Standard on XL

## SYNC 3

- 8" LCD touchscreen
- SYNC AppLink
- Apple CarPlay compatibility<sup>3</sup>
- Android Auto compatibility<sup>3</sup>
- 2 smart-charging USB ports
- Standard on XLT

## SYNC 4: NEW FOR 2022

- 12" LCD touchscreen with Information On Demand panel
- SYNC AppLink with App Catalog
- Wireless phone connection
- Wireless Apple CarPlay compatibility<sup>3</sup>
- Wireless Android Auto compatibility<sup>3</sup>
- Cloud connected
- Conversational voice command recognition
- Digital owner's manual
- Connected navigation<sup>4</sup>
- Standard on LARIAT™

**LARIAT CREW CAB 4x4.** Baja interior. Available equipment.

**1.** Don't drive while distracted or while using handheld devices. Use voice-operated systems when possible. Some features may be locked out while the vehicle is in gear. Not all features are compatible with all phones. **2.** Commands may vary by phone and AppLink software. **3.** Requires phone with active data service and compatible software. SYNC 3/SYNC 4 does not control 3rd-party products while in use. 3rd parties are solely responsible for their respective functionality. **4.** Navigation services require SYNC 4 and FordPass™ Connect, complimentary connect service and the FordPass App (see FordPass Terms for details). Eligible vehicles receive a complimentary 90-day trial of navigation services that begins on the new vehicle warranty start date. Customers must unlock the navigation service trial by activating the eligible vehicle with a FordPass member account. If not subscribed by the end of the complimentary period, the navigation service will terminate. Connected service and features depend on compatible AT&T network availability. Evolving technology/cellular networks/vehicle capability may limit functionality and prevent operation of connected features. FordPass App, compatible with select smartphone platforms, is available via download. Message and data rates may apply. **5.** Driver-assist features are supplemental and do not replace the driver's attention, judgment and need to control the vehicle. It does not replace safe driving. See owner's manual for details and limitations.

## FORD CO-PILOT360™ TECHNOLOGY

From the worksite to the highway, available driver-assist technology features<sup>5</sup> on the 2022 Super Duty Chassis Cab truck can help improve driver confidence and fleet performance, plus help protect your investment in the field.

- Auto High-Beam Headlamps
- Pre-Collision Assist with Automatic Emergency Braking
- Audible Lane Departure Warning
- Rain-Sensing Windshield Wipers

SCAN TO LEARN MORE  
or visit [Ford.com/Technology](https://Ford.com/Technology)  
Data rates may apply.





# ENGINEERED WITH FLEXIBILITY IN MIND.

Upfitter business plans begin right here. From this firm foundation, just install a flatbed/stake body, dump box body, ambulance body, utility body, tow body – the possibilities are almost endless. With F-Series Super Duty® Chassis Cab trucks, vocational workers in health care, construction, landscaping, mobile welding and more can keep working hard, and smart. With 3 cabs and 4 different cab-to-axle length options for configuration flexibility. Available front suspension packages to handle unique job requirements. Six in-cab auxiliary upfitter switches to operate a variety of powered options. Plus, all of the great features listed here.



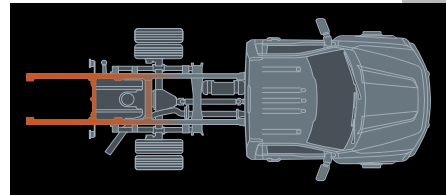
## MASSIVE BRAKES

A large brake pad usable area on F-450, F-550 and F-600 helps both pad and rotor life, while a large master cylinder with plenty of volume helps reduce the risk of thermal brake fade under extreme braking conditions.



## AVAILABLE PROGRAMMABLE UPFITTER INTERFACE MODULE

Gives upfitters a way to properly connect their electrical equipment to the Controller Area Network (CAN) test bus or ports. This allows for integration of needed upgrades, as well as a programmable logic interface to control devices.



## AVAILABLE AFT-OF-AXLE FRAME EXTENSIONS

Provide 42.4" of extension with the 145" WB/60" CA and 32.4" of extension with the 169" WB/84" CA on F-450/F-550 and F-600 Regular Cab models. By allowing upfitted bodies to accommodate additional equipment, these extensions give upfitters outstanding configuration flexibility.

**AN OPEN C-CHANNEL FRAME** aft of cab features a standard 34" frame-rail width.

**A HIGH-STRENGTH, MILITARY-GRADE, ALUMINUM ALLOY CAB<sup>1</sup>** doesn't rust and resists corrosion. For years down the road.

**3-HOLE PATTERN** on the frame underside allows for easy aftermarket hitch installation.

**RUGGED DRIVELINE COMPONENTS** include a choice of strong and capable available rear axles. Available ratios: 3.73 to 4.88. Choices: non-limited-slip, available limited-slip and available electronic-locking. Gear and bearing designs: engineered and optimized by weight for extreme capability. Driveshafts, transfer cases and U-joints: built to handle the massive torque output of all 3 engines.

**ADVANCETRAC™ WITH RSC® (ROLL STABILITY CONTROL™)<sup>2</sup>** enhances stability on varying road surfaces by selectively applying the brakes and modifying engine power to help keep all wheels firmly planted.

**A HEAVY-DUTY FRONT AXLE** and optimized front coil springs in the Extra-Heavy-Duty Front-End Suspension Package provide a Front Gross Axle Weight Rating (FGAWR) of 7,500 lbs. to carry tall utility buckets, cranes, big snow plows, and more. Standard on F-600. Available on F-450/F-550.

**HIGH-STRENGTH-STEEL FRAME** is extremely stiff to handle upfits ranging from flatbeds and dump boxes to wrecker, service and delivery bodies. Fully boxed under the cab and forward, it features between 7 and 10 crossmembers to enhance strength, with select crossmembers through-welded to increase stiffness.

**1.** 6000-series aluminum alloy. **2.** Remember that even advanced technology cannot overcome the laws of physics. It's always possible to lose control of a vehicle due to inappropriate driver input for the conditions.



# XL

## THE CORNERSTONE

Featuring a black grille and front bumper, plus heavy-duty vinyl seating and vinyl flooring, XL is a no-nonsense work truck that's the bedrock of the Chassis Cab truck lineup. All the capability and standard features to get you comfortably through the work week are here, including your choice of 3 powerful engines and a TorqShift® 10-speed SelectShift® automatic transmission calibrated specifically for heavy-duty work.

## XL HIGHLIGHTS

SYNC® with 4.2" LCD screen and 1 smart-charging USB port  
FordPass™ Connect<sup>1</sup> with 4G LTE Wi-Fi hotspot capability<sup>2</sup>  
6 in-cab upfitter switches  
Autolamp (Automatic On/Off Headlamps)  
Manually telescoping trailer tow mirrors

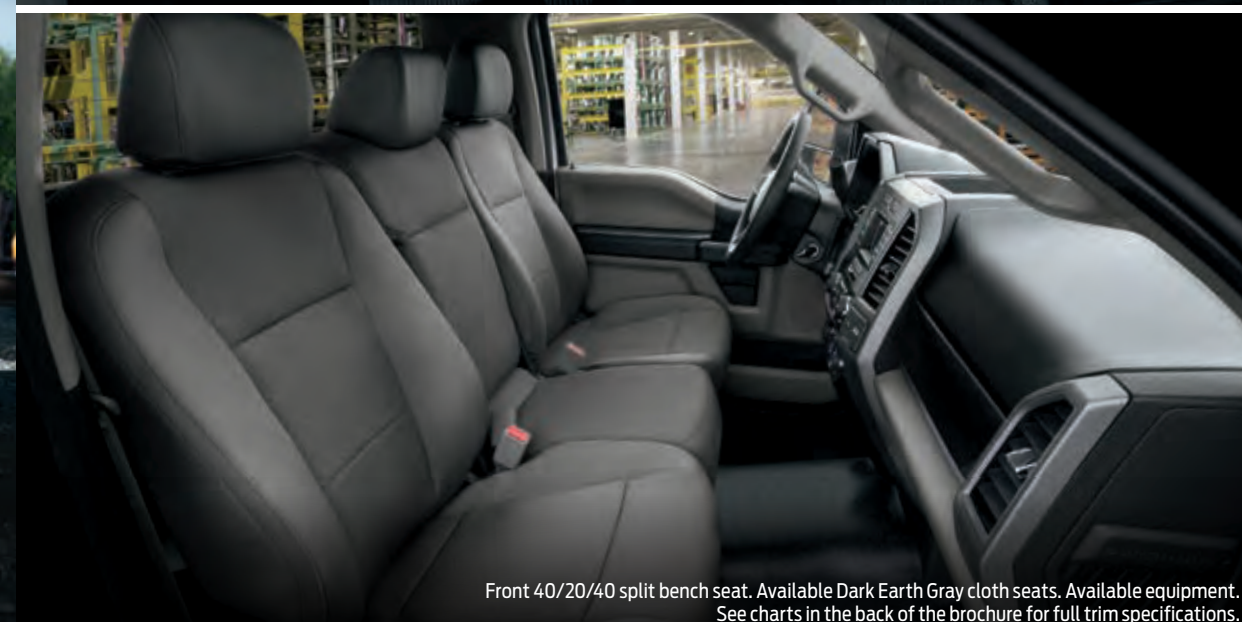


**F-600 REGULAR CAB 4x4.** Race Red. Available and aftermarket upfit equipment.

1. FordPass Connect, the FordPass App, and complimentary Connected Service are required for remote features (see FordPass Terms for details). Connected service and features depend on compatible AT&T network availability. Evolving technology/cellular networks/vehicle capability may limit functionality and prevent operation of connected features. Connected service excludes Wi-Fi hotspot. 2. Wi-Fi hotspot includes complimentary wireless data trial that begins upon AT&T activation and expires at the end of 3 months or when 3GB of data is used, whichever comes first. To activate, go to [www.att.com/ford](http://www.att.com/ford).



Instrument panel. Available equipment.



Front 40/20/40 split bench seat. Available Dark Earth Gray cloth seats. Available equipment. See charts in the back of the brochure for full trim specifications.

**6.2L 2-VALVE GAS V8 FFV**  
Standard: F-350

**7.3L 2-VALVE GAS V8**  
Standard: F-450, F-550, F-600  
Available: F-350

**6.7L POWER STROKE® V8  
TURBO DIESEL**  
Available: F-350, F-450, F-550, F-600

**REGULAR CAB**  
F-350 SRW 60" CA  
F-350 DRW 60" CA/84" CA  
F-450 DRW 60" CA/84" CA/108" CA/120" CA  
F-550 DRW 60" CA/84" CA/108" CA/120" CA  
F-600 DRW 60" CA/84" CA/108" CA/120" CA

**SUPERCAB™**  
F-350 SRW 60" CA  
F-350 DRW 60" CA  
F-450 DRW 60" CA/84" CA  
F-550 DRW 60" CA/84" CA

**CREW CAB**  
F-350 SRW 60" CA  
F-350 DRW 60" CA  
F-450 DRW 60" CA/84" CA  
F-550 DRW 60" CA/84" CA

**VINYL FRONT 40/20/40 SPLIT BENCH SEAT**  
Standard

**CLOTH FRONT 40/20/40 SPLIT BENCH SEAT**  
Available

**VINYL OR CLOTH FRONT BUCKET SEATS  
WITH MINI-CONSOLE**  
Available



# XLT

## THE UTILITY PLAYER

XLT includes great XL equipment, plus the right level of refinement from its substantial list of standard features: chrome grille and front bumper, cloth seating and carpeted flooring, power windows and door locks, SYNC® 3, trailer brake controller, and 110V/400W AC power outlet in the instrument panel. An incredibly versatile Chassis Cab truck, XLT does just about everything well.

## XLT HIGHLIGHTS

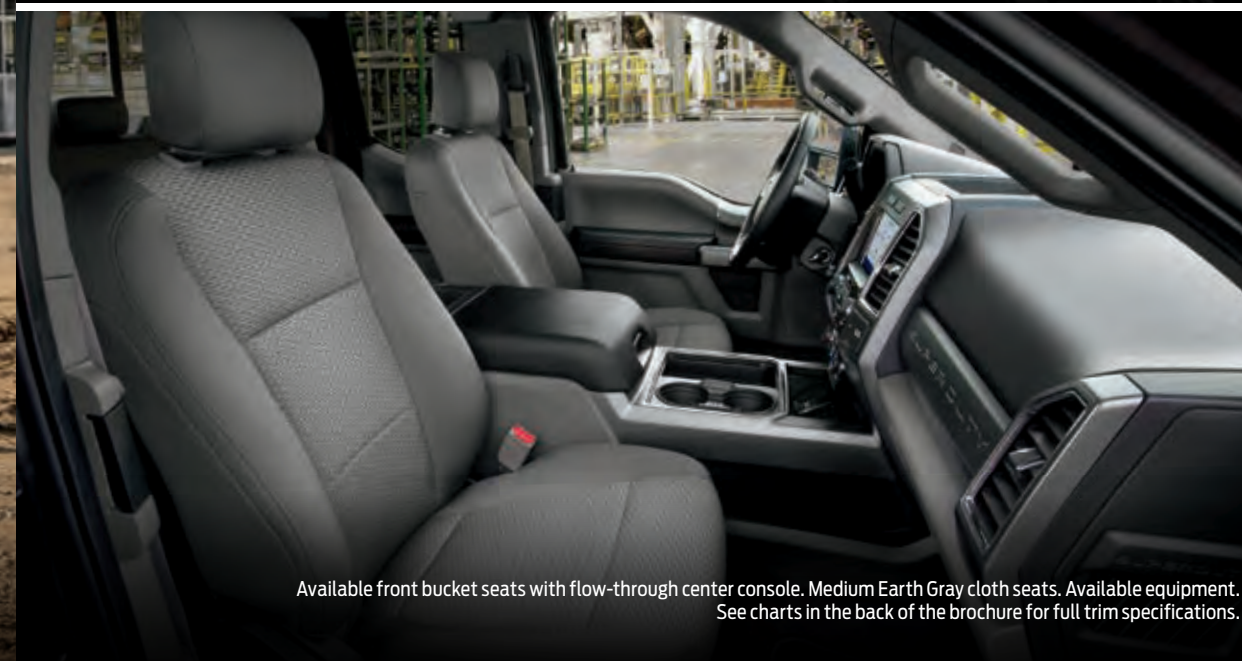
SYNC 3 with 8" LCD touchscreen and 2 smart-charging USB ports  
110V/400W AC power outlet  
MyKey® technology  
Power door locks and windows  
Remote Keyless Entry System  
Trailer brake controller



F-600 REGULAR CAB 4x4. Oxford White. Available and aftermarket upfit equipment.



Instrument panel. Available equipment.



Available front bucket seats with flow-through center console. Medium Earth Gray cloth seats. Available equipment. See charts in the back of the brochure for full trim specifications.

**6.2L 2-VALVE GAS V8 FFV**  
Standard: F-350

**7.3L 2-VALVE GAS V8**  
Standard: F-450, F-550, F-600  
Available: F-350

**6.7L POWER STROKE® V8  
TURBO DIESEL**  
Available: F-350, F-450, F-550, F-600

---

**REGULAR CAB**  
F-350 SRW 60" CA  
F-350 DRW 60" CA/84" CA  
F-450 DRW 60" CA/84" CA/108" CA/120" CA  
F-550 DRW 60" CA/84" CA/108" CA/120" CA  
F-600 DRW 60" CA/84" CA/108" CA/120" CA

**SUPERCAB™**  
F-350 SRW 60" CA  
F-350 DRW 60" CA  
F-450 DRW 60" CA/84" CA  
F-550 DRW 60" CA/84" CA

**CREW CAB**  
F-350 SRW 60" CA  
F-350 DRW 60" CA  
F-450 DRW 60" CA/84" CA  
F-550 DRW 60" CA/84" CA

---

**CLOTH FRONT 40/20/40 SPLIT BENCH SEAT**  
Standard

**CLOTH FRONT BUCKET SEATS  
WITH CENTER CONSOLE**  
Available



# LARIAT™

## CAPABLE COMFORT

With newly available SYNC® 4<sup>1</sup> and its 12" center-stack screen, you're ready to tackle any day driving a LARIAT. A leather-trimmed, 10-way power-adjustable front bucket driver's seat and power-adjustable pedals help you feel right at home. An 8" LCD productivity screen puts vital vehicle information front and center, while the remarkable 10-speaker B&O™ Sound System handles the tunes. Choose the available LARIAT Value Package to add heated and ventilated front seats, memory for the power-adjustable pedals and power sideview mirrors, and more. LARIAT is a welcome mix of capability and comfort.

## LARIAT HIGHLIGHTS

SYNC 4 with Enhanced Voice Recognition and 12" center-stack touchscreen  
Connected navigation<sup>2</sup>  
Dual-zone electronic automatic temperature control  
PowerScope® power-telescoping/-folding trailer tow mirrors  
SecuriCode® keyless entry keypad

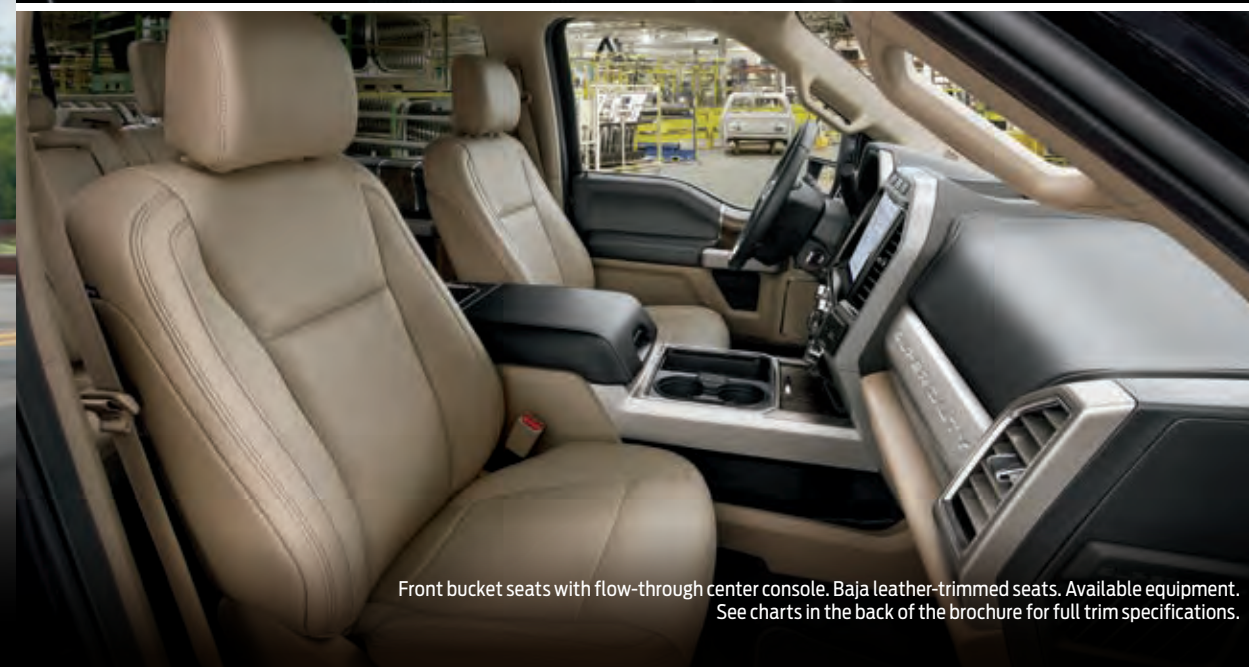


**F-550 CREW CAB 4x4.** Oxford White. Available and aftermarket upfit equipment.

1. Don't drive while distracted or while using handheld devices. Use voice-operated systems when possible. Some features may be locked out while the vehicle is in gear. Not all features are compatible with all phones. 2. Navigation services require SYNC 4 and FordPass™ Connect, complimentary connect service and the FordPass App (see FordPass Terms for details). Eligible vehicles receive a complimentary 90-day trial of navigation services that begins on the new vehicle warranty start date. Customers must unlock the navigation service trial by activating the eligible vehicle with a FordPass member account. If not subscribed by the end of the complimentary period, the navigation service will terminate. Connected service and features depend on compatible AT&T network availability. Evolving technology/cellular networks/vehicle capability may limit functionality and prevent operation of connected features. FordPass App, compatible with select smartphone platforms, is available via download. Message and data rates may apply.



Instrument panel. Available equipment.



Front bucket seats with flow-through center console. Baja leather-trimmed seats. Available equipment. See charts in the back of the brochure for full trim specifications.

**6.2L 2-VALVE GAS V8 FFV**  
Standard: F-350

**7.3L 2-VALVE GAS V8**  
Standard: F-450, F-550  
Available: F-350

**6.7L POWER STROKE® V8  
TURBO DIESEL**  
Available: F-350, F-450, F-550

**SUPERCAB™**  
F-350 SRW 60" CA  
F-350 DRW 60" CA  
F-450 DRW 60" CA/84" CA  
F-550 DRW 60" CA/84" CA

**CREW CAB**  
F-350 SRW 60" CA  
F-350 DRW 60" CA  
F-450 DRW 60" CA/84" CA  
F-550 DRW 60" CA/84" CA

**LEATHER-TRIMMED FRONT BUCKET SEATS  
WITH CENTER CONSOLE**  
Standard

**LEATHER-TRIMMED FRONT 40/20/40 SPLIT  
BENCH SEAT**  
Available



## STANDARD FEATURES

### MECHANICAL & FUNCTIONAL

4-wheel disc brakes with Anti-Lock Brake System (ABS)

7-wire trailer tow wiring harness with relays, blunt cut and labeled

40-gallon aft-of-axle fuel tank

Axle – Narrow-track front (F-350)

Axle – Wide-track front

(F-450/F-550/F-600; includes black front fenders)

Electronic shift-on-the-fly (ESOF) transfer case with manual locking hubs (4x4)

Heavy-duty gas shock absorbers

Hydraulic power-assisted steering

Intelligent Oil-Life Monitor® (diesel engine)

Leaf-spring rear suspension with auxiliary springs and stabilizer bar

Oil-life minder (gas engine)

Power takeoff (PTO) provision with live-drive mobile and stationary modes, and split-shaft capability (diesel engine; PTO port located on driver's side; max. torque output of 300 lb.-ft. in stationary mode)

Stationary Elevated Idle Control (SEIC)<sup>1</sup>

Steering damper

TorqShift® 10-speed SelectShift® automatic transmission with Selectable Drive Modes

Twin-coil monobeam front suspension with stabilizer bar (F-350 4x4/F-450/F-550/F-600)

Twin-I-Beam coil spring front suspension with stabilizer bar (F-350 4x2)

Upfitter switches, 6 located in overhead console

(four 25-amp and two 40-amp; 40-amp are hot-at-all-times capable)

### FORD CO-PILOT360™ TECHNOLOGY

Autolamp (Automatic On/Off Headlamps)

Hill Start Assist

Trailer Sway Control

### CONNECTIVITY & ENTERTAINMENT

12V powerpoint in instrument panel

FordPass™ Connect<sup>2</sup> with 4G LTE Wi-Fi hotspot capability<sup>3</sup>

### EXTERIOR

Configurable daytime running lamps

Front splash guards (F-450/F-550/F-600)

Front tow hooks

LED roof marker/clearance lamps

Variable-intermittent windshield wipers with washers

### SAFETY & SECURITY

AdvanceTrac™ with RSC® (Roll Stability Control™)

Driver and right-front-passenger front airbags,<sup>4</sup> front-seat side airbags,<sup>4</sup> and Safety Canopy® System with side-curtain airbags<sup>4</sup> and rollover sensor

Front-passenger airbag deactivation switch

Individual Tire Pressure Monitoring System (F-350; optional spare tire does not include sensor)

SOS Post-Crash Alert System™

**1.** Final-stage manufacturer must supply control switches. **2.** FordPass Connect, the FordPass App, and complimentary Connected Service are required for remote features (see FordPass Terms for details). Connected service and features depend on compatible AT&T network availability. Evolving technology/cellular networks/vehicle capability may limit functionality and prevent operation of connected features. Connected service excludes Wi-Fi hotspot. **3.** Wi-Fi hotspot includes complimentary wireless data trial that begins upon AT&T activation and expires at the end of 3 months or when 3GB of data is used, whichever comes first. To activate, go to [www.att.com/ford](http://www.att.com/ford). **4.** Always wear your safety belt and follow airbag warning label instructions. **5.** Restrictions may apply. See your dealer for details. **6.** Ford Licensed Accessory. **7.** Navigation services require SYNC 4 and FordPass Connect, complimentary connect service and the FordPass App (see FordPass Terms for details). Eligible vehicles receive a complimentary 90-day trial of navigation services that begins on the new vehicle warranty start date. Customers must unlock the navigation service trial by activating the eligible vehicle with a FordPass member account. If not subscribed by the end of the complimentary period, the navigation service will terminate. FordPass App, compatible with select smartphone platforms, is available via download. Message and data rates may apply. **8.** Includes 3-month All Access trial subscription. SiriusXM audio and data services each require a subscription sold separately, or as a package, by SiriusXM Radio Inc. Your SiriusXM service will automatically stop at the end of your trial unless you decide to subscribe. If you decide to continue service after your trial, the subscription plan you choose will automatically renew thereafter and you will be charged according to your chosen payment method at then-current rates. Fees and taxes apply. To cancel you must call SiriusXM at 1-866-635-2349. See SiriusXM Customer Agreement for complete terms at [www.siriusxm.com](http://www.siriusxm.com). All fees and programming subject to change. Not all vehicles or devices are capable of receiving all services offered by SiriusXM. Current information and features may not be available in all locations, or on all receivers. Satellite and streaming lineups vary slightly. Certain features and/or content may not be available unless an active data connection is enabled in the vehicle. Content varies by SiriusXM subscription package.

<b>XL</b>	<b>XLT</b>	<b>LARIAT™</b>	
<b>S</b>	<b>S</b>	<b>S</b>	<b>ENGINES</b>
<b>S</b>	<b>S</b>	<b>S</b>	<b>6.2L 2-valve gas V8 FFV engine</b> (F-350)
<b>0</b>	<b>0</b>	<b>0</b>	<b>7.3L 2-valve gas V8 engine</b> (F-450/F-550/F-600)
<b>0</b>	<b>0</b>	<b>0</b>	<b>7.3L 2-valve gas V8 engine</b> (F-350)
<b>0</b>	<b>0</b>	<b>0</b>	<b>6.7L Power Stroke® V8 Turbo Diesel engine</b> with manual push-button engine exhaust braking
			<b>MECHANICAL &amp; FUNCTIONAL</b>
<b>S</b>			650-CCA, 72-amp-hr single battery (6.2L gas)
<b>S</b>	<b>S</b>	<b>S</b>	750-CCA, 78-amp-hr single battery (gas)
<b>5/0</b>	<b>5/0</b>	<b>5/0</b>	750-CCA, 78-amp-hr dual batteries (standard diesel; standard on XLT and LARIAT with 7.3L gas)
<b>S</b>	<b>S</b>	<b>S</b>	Fuel tank – 40-gallon aft-of-axle
<b>5/0</b>	<b>5/0</b>	<b>0</b>	Power takeoff (PTO) provision with live-drive mobile and stationary modes <sup>5</sup> (gas engines; standard on F-600; PTO port located on driver's side; max. torque output of 250 lb.-ft. in stationary mode)
<b>0</b>	<b>S</b>	<b>S</b>	Trailer brake controller with Smart Trailer Tow Connector <sup>5</sup>
<b>0</b>	<b>0</b>		Aft-of-axle frame extension <sup>5</sup> (F-450/F-550/F-600 Regular Cab 145" and 169" wheelbases)
<b>0</b>	<b>0</b>		Engine idle shutdown (5-, 10-, 15- or 20-minute)
<b>0</b>	<b>0</b>	<b>0</b>	Fuel tank – 26.5-gallon mid-ship <sup>5</sup> (replaces standard tank)
<b>0</b>	<b>0</b>		Fuel tanks – Dual diesel with 40-gallon aft-of-axle and 26.5-gallon mid-ship (DRW diesel engine)
<b>0</b>	<b>0</b>		Operator-commanded exhaust filter regeneration with active regeneration inhibit (diesel engine)
<b>0</b>	<b>0</b>		Speed limitation (65-mph or 75-mph governed top speed; Fleet only)
<b>0</b>	<b>0</b>	<b>0</b>	Engine block heater
<b>0</b>	<b>0</b>	<b>0</b>	Front license plate bracket (standard where required)
<b>0</b>	<b>0</b>	<b>0</b>	Individual Tire Pressure Monitoring System delete (F-350 SRW; Fleet only)
<b>0</b>	<b>0</b>	<b>0</b>	Jack (2-ton mechanical for SRW; 4-ton hydraulic for F-350 DRW; 6-ton hydraulic for F-450/F-550/F-600)
<b>0</b>	<b>0</b>	<b>0</b>	Programmable Upfitter Interface Module
<b>0</b>	<b>0</b>	<b>0</b>	Spare wheel, tire and jack (excludes carrier)

<b>XL</b>	<b>XLT</b>	<b>LARIAT</b>	
<b>0</b>	<b>0</b>	<b>0</b>	<b>FORD CO-PILOT360 TECHNOLOGY</b>
<b>0</b>	<b>0</b>	<b>0</b>	Audible Lane Departure Warning <sup>5</sup>
			Pre-Collision Assist with Automatic Emergency Braking (AEB) and Auto High-Beam Headlamps <sup>5</sup>
		<b>0</b>	Rain-Sensing Windshield Wipers
			<b>SEATING</b>
<b>S</b>	<b>S</b>	<b>S</b>	60/40 split flip-up rear seat (SuperCab™/Crew Cab)
<b>S</b>			40/20/40 split front bench seat with driver's side manual lumbar, and folding armrest with cupholders and storage
<b>S</b>			Heavy-duty vinyl seats
<b>0</b>	<b>S</b>		Cloth seats
	<b>S</b>	<b>0</b>	40/20/40 split front bench seat with driver's side manual lumbar, center under-seat lockable storage with 12V powerpoint, and folding armrest with cupholders and storage
	<b>S</b>		Leather-trimmed front seating
	<b>S</b>		Fold-down rear-seat center armrest with dual integrated cupholders (Crew Cab)
	<b>0</b>	<b>S</b>	Front bucket seats and flow-through center console with storage, rear-facing 12V powerpoint and 110V/400W AC power outlet (SuperCab/Crew Cab)
	<b>S</b>		Power front seats (10-way driver; 8-way passenger)
	<b>S</b>		Premium vinyl (SuperCab) or leather-trimmed (Crew Cab) rear seating
	<b>S</b>		Rear under-seat fold-flat, lockable and partitionable storage (Crew Cab)
	<b>S</b>		Rear under-seat storage (SuperCab)
	<b>0</b>		Front bucket seats with mini-console and driver's side manual lumbar
	<b>0</b>		Heated driver's seat <sup>5</sup> (SuperCab/Crew Cab)
		<b>0</b>	Heated rear outboard seats <sup>5</sup> (Crew Cab)

<b>XL</b>	<b>XLT</b>	<b>LARIAT</b>	
<b>S</b>			<b>INTERIOR</b>
<b>S</b>	<b>S</b>		2.3" LCD productivity screen in instrument cluster
<b>S</b>	<b>S</b>		Fixed rear window
<b>S</b>	<b>0</b>	<b>0</b>	Single-zone manual climate control
<b>S</b>	<b>0</b>	<b>0</b>	Flooring – Black vinyl/carpet delete
<b>S</b>	<b>S</b>	<b>S</b>	Manual-tilt/-telescoping steering column
<b>0</b>	<b>S</b>	<b>S</b>	110V/400W AC power outlet in instrument panel <sup>5</sup>
<b>0</b>	<b>S</b>	<b>S</b>	Cruise control (Fleet only on XL)
<b>0</b>	<b>S</b>	<b>S</b>	Rear privacy glass
	<b>S</b>	<b>S</b>	Flooring – Carpet with carpeted floor mats
	<b>P</b>	<b>S</b>	Accessory delay for power features
	<b>P</b>	<b>S</b>	Power door locks
	<b>P</b>	<b>S</b>	Power windows with front one-touch-up/-down feature
	<b>S</b>	<b>S</b>	4.2" LCD productivity screen in instrument cluster
<b>0</b>	<b>0</b>	<b>S</b>	Power-sliding rear window with defroster <sup>5</sup> (SuperCab/Crew Cab)
	<b>0</b>	<b>S</b>	Power-adjustable pedals
		<b>S</b>	8" LCD productivity screen in instrument cluster
		<b>S</b>	Auto-dimming rearview mirror
		<b>S</b>	Dual-zone electronic automatic temperature control
		<b>S</b>	Leather-wrapped steering wheel
<b>0</b>	<b>0</b>		Fixed rear window with defroster
<b>0</b>	<b>0</b>	<b>0</b>	Rapid-heat supplemental cab heater (diesel engine)
	<b>0</b>	<b>0</b>	Flooring – Floor liners (SuperCab/Crew Cab; deletes standard carpeted floor mats)
	<b>0</b>	<b>0</b>	Vehicle safe <sup>5,6</sup>
			<b>EXTERIOR</b>
<b>S</b>			Black grille, front bumper, mirror caps, and door handles
<b>S</b>			Manually telescoping trailer tow mirrors with 2-way fold and manual glass
<b>S</b>	<b>S</b>	<b>S</b>	Quad-beam jewel-effect halogen headlamps
	<b>P</b>	<b>S</b>	Manually telescoping trailer tow mirrors with 2-way fold, power/heated glass, heated manual spotter mirrors, and integrated clearance lamps/turn signal indicators
	<b>S</b>		Chrome grille and front bumper; black mirror caps and door handles
	<b>P</b>	<b>S</b>	Remote Keyless Entry System
	<b>0</b>	<b>S</b>	Halogen fog lamps <sup>5</sup>
	<b>0</b>	<b>S</b>	LED sideview mirror spotlights <sup>5</sup>
	<b>0</b>	<b>S</b>	PowerScope® power-telescoping/-folding trailer tow mirrors with power/heated glass, heated manual spotter mirrors, autofold, high-intensity LED security approach lamps, and LED sideview mirror spotlights

<b>XL</b>	<b>XLT</b>	<b>LARIAT</b>	
		<b>S</b>	Chrome grille and front bumper; body-color mirror caps and door handles
	<b>0</b>		Chrome grille (Fleet only)
	<b>0</b>	<b>0</b>	Manually telescoping trailer tow mirrors with 2-way fold, power/heated glass, heated manual spotter mirrors, and integrated clearance lamps/turn signal indicators (102" width; Regular Cab DRW)
	<b>0</b>	<b>0</b>	Non-configurable daytime running lamps (replaces standard configurable daytime running lamps; Fleet only)
	<b>0</b>	<b>0</b>	Black molded hood deflector
	<b>0</b>	<b>0</b>	Cab steps – Black platform running boards
	<b>0</b>	<b>0</b>	Camera – Rear View Camera and prep kit (includes pre-installed body and frame wiring, loose camera with mounting bracket, and 20' jumper wire)
	<b>0</b>	<b>0</b>	Center high-mounted stop lamp (CHMSL)
	<b>0</b>	<b>0</b>	Exterior backup alarm <sup>6</sup>
	<b>0</b>	<b>0</b>	360-Degree Dual Beacon LED warning strobes <sup>5,6</sup> (amber or amber/white)
	<b>0</b>	<b>0</b>	Remote Start System <sup>5</sup>
	<b>0</b>	<b>0</b>	Skid plate for transfer case (4x4)
	<b>0</b>	<b>0</b>	Splash guards, molded, front (F-350)
	<b>0</b>	<b>0</b>	Wheel-well liners, front
		<b>S</b>	<b>CONNECTIVITY &amp; ENTERTAINMENT</b>
		<b>S</b>	SYNC® Voice Recognition Communications System with 4.2" LCD screen, 911 Assist®, AppLink®, and 1 smart-charging USB port
		<b>S</b>	SYNC 3 with 8" LCD capacitive touchscreen in center stack, 911 Assist, AppLink, Apple CarPlay® compatibility, Android Auto™ compatibility, and 2 smart-charging USB ports
		<b>S</b>	SYNC 4 with Enhanced Voice Recognition with 12" LCD touchscreen, conversational voice command recognition, cloud connectivity, wireless phone connection, 911 Assist, AppLink with App Catalog, wireless Apple CarPlay compatibility, wireless Android Auto compatibility, digital owner's manual and connected navigation <sup>2,7</sup>
	<b>S</b>	<b>S</b>	AM/FM stereo with MP3 capability
	<b>0</b>	<b>S</b>	SiriusXM® <sup>8</sup> with 3-month All Access trial subscription <sup>8</sup>
		<b>S</b>	SiriusXM with 360L with 3-month All Access trial subscription <sup>9</sup>
		<b>0</b>	Voice-Activated Touchscreen Navigation System with HD Radio™ Technology, and integrated SiriusXM Traffic and Travel Link® with 5-year subscription <sup>8</sup>
		<b>S</b>	B&O™ Sound System with MP3 capability, and 10 speakers including a subwoofer

**S:** STANDARD

**0:** OPTIONAL

**P:** PACKAGED



XL	XLT	LARIAT™
<b>P S S</b>	<b>S</b>	<b>S</b>
<b>P S S</b>	<b>S</b>	<b>S</b>
<b>P S S</b>	<b>S</b>	<b>S</b>
<b>P S</b>	<b>S</b>	<b>S</b>
<b>O</b>		
<b>O O O</b>		
<b>O O</b>		
<b>O O</b>		
<b>O O</b>		
<b>O O</b>		
<b>O O</b>		
<b>O O</b>		
<b>O O O</b>		

XL	XLT	LARIAT
<b>O O O</b>	<b>O</b>	<b>O O</b>
<b>O O O</b>	<b>O</b>	<b>O O</b>
<b>O O O</b>	<b>O</b>	<b>O O</b>
<b>O O O</b>	<b>O</b>	<b>O O</b>
<b>O O O</b>	<b>O</b>	<b>O O</b>
<b>O O O</b>	<b>O</b>	<b>O O</b>
<b>O O O</b>	<b>O</b>	<b>O O</b>
<b>O O O</b>	<b>O</b>	<b>O O</b>
<b>O O O</b>	<b>O</b>	<b>O O</b>
<b>O O O</b>	<b>O</b>	<b>O O</b>

### INTERIOR MEASUREMENTS

INTERIOR (in.; front/rear)	REGULAR CAB	SUPERCAB	CREW CAB
Head room	40.8/—	40.8/40.3	40.8/40.4
Leg room (max.)	43.9/—	43.9/33.5	43.9/43.6
Hip room	62.5/—	62.5/64.7	62.5/64.7
Shoulder room	66.7/—	66.7/65.8	66.7/65.9
Total passenger volume (cu. ft.)	64.6	116.0	131.8
Cargo volume behind 1st row (cu. ft.)	11.6	31.6	52.1

**S:** STANDARD  
**O:** OPTIONAL  
**P:** PACKAGED

### AVAILABLE TRIM PACKAGES

#### XL

**Power Equipment Group:** accessory delay for power features; manually telescoping trailer tow mirrors with 2-way fold, power/heated glass, heated manual spotter mirrors, and integrated clearance lamps/turn signal indicators; Advanced Security Pack with SecuriLock Passive Anti-Theft System and inclination/intrusion sensors; power door locks; power windows with front one-touch-up/-down feature; upgraded door-trim panels; MyKey; and Remote Keyless Entry System with 2 integrated keyhead transmitter remotes

**XL Decor Group** (Fleet only): bright center caps on wheels (SRW only), and chrome front bumper

**XL Value Package:** chrome front bumper, bright center caps on wheels (SRW only), and cruise control

#### XLT

**XLT Value Package:** SecuriCode keyless entry keypad, 8-way power driver's seat, and rear under-seat storage (fixed storage on SuperCab™; foldable/locking storage on Crew Cab)

#### LARIAT

**LARIAT Value Package:** Remote Start System, heated and ventilated front seats, easy-entry/-exit driver's seat with memory, and memory feature for sideview mirrors and power-adjustable pedals

### DIMENSIONS/WEIGHTS

	REGULAR CAB														
	F-350 SRW 4x2/4x4	F-350 DRW <sup>3</sup> 4x2/4x4	F-350 DRW <sup>3</sup> 4x2/4x4	F-450 DRW 4x2/4x4	F-450 DRW 4x2/4x4	F-450 DRW 4x2/4x4	F-450 DRW 4x2/4x4	F-550 DRW 4x2/4x4	F-550 DRW 4x2/4x4	F-550 DRW 4x2/4x4	F-550 DRW 4x2/4x4	F-600 DRW 4x2/4x4	F-600 DRW 4x2/4x4	F-600 DRW 4x2/4x4	F-600 DRW 4x2/4x4
Wheelbase	145.3"	145.3"	169.3"	145.3"	169.3"	193.3"	205.3"	145.3"	169.3"	193.3"	205.3"	145.3"	169.3"	193.3"	205.3"
Cab-to-axle	60"	60"	84"	60"	84"	108"	120"	60"	84"	108"	120"	60"	84"	108"	120"
<b>EXTERIOR (in.)</b>															
Height															
Top of cab to ground	79.1/81.9	79.3/82.2	79.2/82.0	82.6/82.4	82.4/82.2	82.3	82.3	82.6	82.4	82.5/82.4	82.4	83.5/83.4	83.3/83.1	83.1/83.0	83.1/82.9
Top of frame to ground	32.7/34.9	33.0/34.8	32.7/34.4	35.4/35.5	35.0	34.8	34.8	35.4	35.0	34.8	34.7	34.8	34.5	33.4/33.5	33.4
Width between frame rails	34.1	34.1	34.1	34.2	34.2	34.2	34.2	34.2	34.2	34.2	34.2	34.2	34.2	34.2	34.2
Axle clearance	9.0/8.9	8.4/8.3	8.4	8.5	8.6	8.6	8.6	8.5	8.6	8.6	8.6	9.1	9.1	9.1	9.1
Front track	68.3	69.1	69.1	74.8	74.8	74.8	74.8	74.8	74.8	74.8	74.8	74.8	74.8	74.8	74.8
Rear tire outside width	79.6 <sup>4</sup>	92.2	92.2	93.9	93.9	93.9	93.9	93.9	93.9	93.9	93.9	95.2	95.2	95.2	95.2
Overall length	230.7	230.7	254.8	230.7	254.8	278.8	290.7	230.7	254.8	278.8	290.7	230.7	254.8	278.8	290.7
Weights (lbs.)															
Max. GVWR <sup>5</sup>	11,100/11,500	14,000	14,000	16,500	16,500	16,500	16,500	19,000	19,500	19,500	19,500	22,000	22,000	22,000	22,000
Max. payload <sup>5</sup>	4,870/4,860	7,940/7,550	7,900/7,500	9,850/9,540	9,790/9,450	9,610/9,300	9,550/9,230	12,310/12,000	12,750/12,410	12,570/12,260	12,510/12,190	15,090/14,780	15,020/14,690	14,840/14,540	14,790/14,470

	SUPERCAB						CREW CAB					
	F-350 SRW 4x2/4x4	F-350 DRW <sup>3</sup> 4x2/4x4	F-450 DRW 4x2/4x4	F-450 DRW 4x2/4x4	F-550 DRW 4x2/4x4	F-550 DRW 4x2/4x4	F-350 SRW 4x2/4x4	F-350 DRW <sup>3</sup> 4x2/4x4	F-450 DRW 4x2/4x4	F-450 DRW 4x2/4x4	F-550 DRW 4x2/4x4	F-550 DRW 4x2/4x4
Wheelbase	167.9"	167.9"	167.9"	191.9"	167.9"	191.9"	179.8"	179.8"	179.8"	203.8"	179.8"	203.8"
Cab-to-axle	60"	60"	60"	84"	60"	84"	60"	60"	60"	84"	60"	84"
<b>EXTERIOR (in.)</b>												
Height												
Top of cab to ground	79.3/82.0	79.6/82.2	82.5	82.5/82.4	82.7/82.5	82.5	79.4/82.1	79.7/82.3	82.8/82.6	82.6/82.5	82.8	82.6
Top of frame to ground	32.3/34.2	32.6/34.4	35.0	34.8	34.9/35.0	34.8	32.1/34.0	32.5/34.3	34.8/34.9	34.7/34.8	34.8	34.8/34.7
Width between frame rails	34.1	34.1	34.2	34.2	34.2	34.2	34.1	34.1	34.2	34.2	34.2	34.2
Axle clearance	9.0	8.4	8.6	8.6	8.6	8.6	9.0/8.9	8.4	8.6	8.6	8.6	8.6
Front track	68.3	69.1	74.8	74.8	74.8	74.8	68.3	69.1	74.8	74.8	74.8	74.8
Rear tire outside width	79.6 <sup>4</sup>	92.2	93.9	93.9	93.9	93.9	79.6 <sup>4</sup>	92.2	93.9	93.9	93.9	93.9
Overall length	253.3	253.3	253.3	277.4	253.3	277.4	265.2	265.2	265.2	289.2	265.2	289.2
Weights (lbs.)												
Max. GVWR <sup>5</sup>	11,500	14,000	16,500	16,500	19,500	19,500	11,500	14,000	16,500	16,500	19,500	19,500
Max. payload <sup>5</sup>	4,970/4,940	7,600/7,200	9,550/9,190	9,360/9,030	12,510/12,150	12,320/11,990	4,830/4,820	7,460/7,040	9,380/9,070	9,230/8,940	12,340/12,030	12,190/11,900

SRW = Single Rear Wheel DRW = Dual Rear Wheel GVWR = Gross Vehicle Weight Rating GAWR = Gross Axle Weight Rating

**1.** Restrictions may apply. See your dealer for details. **2.** See dealer for springs/front Gross Axle Weight Rating (GAWR) of specific vehicle configurations. **3.** F-350 DRW with diesel engine and available Ambulance Prep Package with wide-track rear axle: rear tire outside width is 95.2." **4.** 78.5 with available 17" wheels. **5.** When properly configured. Max. payload varies and is based on accessories and vehicle configuration. See label on door jamb for carrying capacity of a specific vehicle.



**5TH - WHEEL / GOOSENECK TOWING**

 GCWR & Maximum Loaded Trailer Weight Ratings (lbs.)<sup>1</sup> – SAE J2807 Compliant

Engine	Axle Ratio	GCWR	F-350 SRW 4x2	F-350 SRW 4x4	F-350 DRW 4x2	F-350 DRW 4x4	F-450 DRW 4x2	F-450 DRW 4x4	F-550 DRW 4x2	F-550 DRW 4x4	F-600 DRW 4x2	F-600 DRW 4x4	
<b>REGULAR CAB</b>													
6.2L 2-valve Gas V8 FFV	3.73	19,500/20,000	13,100/–	12,700/–	–/13,000	–/12,600							
	4.30	23,000/23,500	16,600/–	16,200/–	–/16,500	–/16,100							
7.3L 2-valve Gas V8	3.73	22,500			15,500	15,100							
	4.30	26,000	19,400	19,000	19,000	18,600							
	4.88	28,000/30,000					20,400/–	20,100/–	20,400/–	20,100/–	–/ 22,200	–/ 21,900	
6.7L Diesel V8	3.73	30,000/31,500	22,700/–	22,200/–	–/23,700	–/23,300							
	4.10	32,500			24,700	24,300	24,100	23,800	24,100	23,800			
	4.30	35,000/37,000					26,600/–	26,300/–	–/28,600	–/28,300			
	4.88	32,500 <sup>2</sup>								24,100 <sup>2</sup>	23,800 <sup>2</sup>		
		40,000 <sup>2</sup>								31,600 <sup>2</sup>	31,300 <sup>2</sup>		
	43,000										34,500	34,200	
<b>SUPERCAB™</b>													
6.2L 2-valve Gas V8 FFV	3.73	19,500/20,000	12,800/–	12,400/–	–/12,600	–/12,200							
	4.30	23,000/23,500	16,300/–	15,900/–	–/16,100	–/15,700							
7.3L 2-valve Gas V8	3.73	22,500			15,100	14,700							
	4.30	26,000	19,100	18,700	18,600	18,200							
	4.88	28,000					20,100	19,700	20,100	19,700			
6.7L Diesel V8	3.73	30,000/31,500	22,300/–	21,900/–	–/23,400	–/23,000							
	4.10	32,500			24,400	24,000	23,800	23,500	23,800	23,500			
	4.30	35,000/37,000					26,300/–	26,000/–	–/28,300	–/28,000			
	4.88	32,500 <sup>2</sup>								23,800 <sup>2</sup>	23,400 <sup>2</sup>		
40,000 <sup>2</sup>									31,300 <sup>2</sup>	30,900 <sup>2</sup>			
<b>CREW CAB</b>													
6.2L 2-valve Gas V8 FFV	3.73	19,500/20,000	12,600/–	12,200/–	–/12,500	–/12,100							
	4.30	23,000/23,500	16,100/–	15,700/–	–/16,000	–/15,600							
7.3L 2-valve Gas V8	3.73	22,500			15,000	14,600							
	4.30	26,000	18,900	18,500	18,500	18,100							
	4.88	28,000					19,900	19,600	19,900	19,600			
6.7L Diesel V8	3.73	30,000/31,500	22,100/–	21,300/–	–/23,200	–/22,800							
	4.10	32,500			24,200	23,800	23,700	23,400	23,700	23,400			
	4.30	35,000/37,000					26,200/–	25,900/–	–/28,200	–/27,900			
	4.88	32,500 <sup>2</sup>								23,600 <sup>2</sup>	23,300 <sup>2</sup>		
40,000 <sup>2</sup>									31,100 <sup>2</sup>	30,800 <sup>2</sup>			

**5th-Wheel Towing Notes:** Trailer weights shown assume 400 lbs.-800 lbs. second-unit body weight. Be sure combined weight of vehicle and trailer does not exceed listed GCWR. Trailer tongue (trailer king pin for 5th-wheel towing) load weight should be 10% (15% for 5th-wheel towing) of total loaded trailer weight. Make sure that the vehicle payload (reduced by option weight) will accommodate trailer tongue (trailer king pin for 5th-wheel towing) load weight and the weight of passengers and cargo added to the towing vehicle. The addition of trailer tongue (trailer king pin for 5th-wheel towing) load weight, and the weight of passengers and cargo, cannot cause vehicle weights to exceed the rear GAWR (Gross Axle Weight Rating) or GVWR (Gross Vehicle Weight Rating). These ratings can be found on the vehicle's Safety Compliance Certification Label. See your Ford Dealer for conventional trailer weights.

**ENGINES**

	6.2L 2-Valve Gas V8 FFV	7.3L 2-Valve Gas V8	6.7L Power Stroke® V8 Turbo Diesel
Configuration	SOHC	OHV	OHV (32-valve)
Compression ratio	9.8:1	10.5:1	15.8:1
Horsepower @ rpm	385 @ 5,750 <sup>3</sup>	350 @ 3,900	330 @ 2,600
Torque lb.-ft. @ rpm	430 @ 3,800 <sup>3</sup>	468 @ 3,900	825 @ 2,000
Recommended fuel	Regular unleaded or E85	Regular unleaded	Ultra-low sulfur diesel or B20 (containing 20% or less biodiesel)
PTO provision availability	Available	Available	Standard

**STANDARD GROSS AXLE WEIGHT RATINGS (GAWR)<sup>4</sup> (lbs.)**

	Max. Front	Max. Rear
F-350 SRW 4x2	5,300	7,230
F-350 SRW 4x4	5,600	7,230
F-350 DRW 4x2	5,300	10,040
F-350 DRW 4x4	5,600	10,040
F-450 DRW	6,500	12,880
F-550 DRW	7,000	14,706
F-600 DRW	7,500	15,500

**MECHANICAL**

<b>Shock Absorbers</b>	1.38" gas type	
<b>Brakes</b>	Rotor diameter (in.; front/rear)	Lining area (sq. in.; front/rear)
F-350	14.29/14.29	50.9/39.6
F-450/F-550/F-600	15.39/15.75	68.8/64.8
<b>Wheels</b>	Number of studs	Bolt-circle diameter (in.)
F-350 SRW	8	6.69 (170-mm)
F-350 DRW	8	7.87 (200-mm)
F-450/F-550/F-600	10	8.85 (225-mm)

GCWR = Gross Combination Weight Rating    WB = Wheelbase    Horsepower, torque and towing are independent attributes and may not be achieved simultaneously.

**1.** F-350 DRW/F-450/F-550 weights shown are for 145.3" wheelbase Regular Cab, 167.9" wheelbase SuperCab or 179.8" wheelbase Crew Cab models. For 169.3", 191.9", 193.3", 203.8" and 205.3" wheelbase models, weights may be somewhat less (usually not more than 200 lbs., or 400 lbs. with 205.3" wheelbase). **2.** Requires available High-Capacity Trailer Tow Package. **3.** Certified to SAE J1349® **4.** Rating shown does not include additional suspension upgrade packages. See your dealer for ratings for vehicles with suspension upgrade packages. **5.** Restrictions may apply. See your dealer for details. **6.** Measured to inside of metal. **7.** Cross-sectional modulus calculated at back of cab.

**REAR AXLES**

	Engine	Standard	Available
F-350 SRW	6.2L Gas	3.73 non-limited-slip	3.73 electronic-locking 4.30 electronic-locking
	7.3L Gas	4.30 electronic-locking	
	6.7L Diesel	3.73 non-limited-slip	3.73 electronic-locking
F-350 DRW	6.2L Gas	3.73 non-limited-slip	4.30 limited-slip
	7.3L Gas	3.73 non-limited-slip	4.30 limited-slip
	6.7L Diesel	3.73 non-limited-slip	4.10 limited-slip
F-450 DRW	7.3L Gas	4.88 non-limited-slip	4.88 limited-slip
	6.7L Diesel	4.10 non-limited-slip	4.10 limited-slip 4.30 limited-slip <sup>5</sup>
F-550 DRW	7.3L Gas	4.88 non-limited-slip	4.88 limited-slip
	6.7L Diesel	4.10 non-limited-slip	4.10 limited-slip 4.30 limited-slip <sup>5</sup> 4.88 limited-slip <sup>5</sup>
F-600 DRW	7.3L Gas	4.88 limited-slip	
	6.7L Diesel	4.88 limited-slip	

**ALTERNATORS**

Engine	Trim	Standard	Available
6.2L Gas	XL	200-amp	240-amp
	XLT, LARIAT™	240-amp	
7.3L Gas	XL	240-amp	397-amp
	XLT, LARIAT	397-amp	
6.7L Diesel	XL	240-amp	332-amp 397-amp
	XLT, LARIAT	332-amp	397-amp

**FRAMES**

<b>Number of Crossmembers</b>
7 (145.3" WB)
8 (167.9" WB, 169.3" WB, 179.8" WB )
9 (191.9" WB, 203.8" WB, 193.3" WB)
10 (205.3" WB)
<b>Max. Side Rail Section<sup>6</sup> (height x width x thickness)</b>
7.50" x 2.74" x 0.28" (F-350)
7.50" x 2.74" x 0.32" (F-450/F-550 145.3" WB, 169.3" WB, 167.9" WB, 179.8" WB, 203.8" WB)
7.50" x 2.74" x 0.60" (F-450/F-550 191.9" WB, 193.3" WB, 205.3" WB; F-550 with the Payload Plus Upgrade Package; F-600)
<b>Section Modulus<sup>7</sup></b>
12.7 cu. in.
<b>Frame Rail Yield Strength</b>
50,000 psi



**WHEELS**



**A B C D**



**E F G H**



**I J K L**

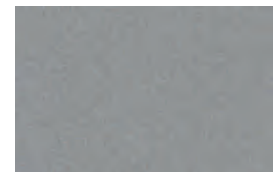
XL	XLT	LARIAT™	
			<b>F-350 SRW WHEELS/TIRES</b>
S			A. 18" Argent-Painted Steel with Painted Center Cap
0	0		B. 17" Argent-Painted Steel with Painted Center Cap
		S	C. 18" Cast-Aluminum with Bright Center Cap
		S	D. 18" Bright-Machined Cast-Aluminum with Bright Center Cap
S	S	S	LT275/65Rx18E BSW all-season tires
0	0		LT245/75Rx17E BSW all-season tires <sup>1</sup>
0	0		LT245/75Rx17E BSW all-terrain tires <sup>1</sup>
0	0		LT265/70Rx17E OWL all-terrain tires <sup>1</sup>
0	0	0	LT275/70Rx18E BSW all-terrain tires (4x4)
		0	LT275/70Rx18E OWL all-terrain tires (4x4)
			<b>F-350 DRW WHEELS/TIRES</b>
S	S		E. 17" Argent-Painted Steel without Center Cap
0	0		F. 17" Stainless Steel Covers, Front and Rear <sup>1</sup> (requires steel wheels)
0	0	S	G. 17" Polished Forged-Aluminum <sup>2</sup> with Bright Center Cap
S	S	S	LT245/75Rx17E BSW all-season tires
0	0	0	LT245/75Rx17E BSW all-terrain tires
		0	LT245/75Rx17E OWL all-terrain tires (BSW rear inner tires)
			<b>F-450/F-550 WHEELS/TIRES</b>
S	S		H. 19.5" Argent-Painted Steel without Center Cap (19.5" x 6")
0	0		I. 19.5" Stainless Steel Covers, Front and Rear <sup>1</sup> (requires steel wheels)
		0	J. 19.5" Polished Forged-Aluminum <sup>2</sup> with Bright Center Cap
S	S	S	225/70Rx19.5G BSW all-position tires
0	0	0	225/70Rx19.5G BSW traction <sup>1</sup> (includes 2 all-position tires on front and 4 traction tires on rear)
0	0	0	225/70Rx19.5G BSW traction (4x4; includes 2 traction tires on front and 4 traction tires on rear)
		0	225/70Rx19.5G BSW traction (Regular Cab 4x2; includes 2 all-position tires on front and 4 traction tires on rear)
			<b>F-600 WHEELS/TIRES</b>
S	S		K. 19.5" Argent-Painted Steel without Center Cap (19.5" x 6.75")
		0	L. 19.5" Polished Forged-Aluminum <sup>2</sup> with Bright Center Cap (19.5" x 6.75")
S	S		245/70Rx19.5G BSW all-position tires
0	0		245/70Rx19.5G BSW traction tires (includes 2 all-position tires on front and 4 traction tires on rear)
0	0		245/70Rx19.5G BSW traction tires (includes 6 traction tires)

**S:** STANDARD  
**0:** OPTIONAL

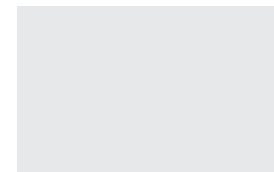
**EXTERIOR**



Agate Black Metallic



Iconic Silver Metallic



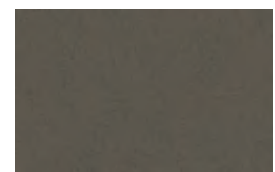
Oxford White



Carbonized Gray Metallic



Race Red



Stone Gray Metallic



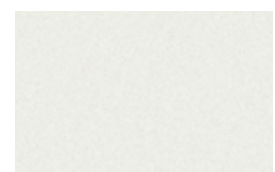
Antimatter Blue Metallic



Atlas Blue Metallic<sup>1</sup>

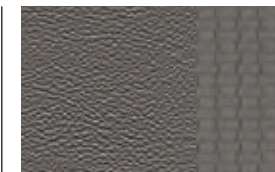


Rapid Red Metallic Tinted Clearcoat<sup>1,3</sup>

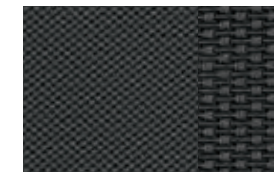


Star White Metallic Tri-coat<sup>3</sup>

**INTERIOR**



**1** Medium Earth Gray Vinyl XL



**2** Dark Earth Gray Cloth XL



**3** Medium Earth Gray Cloth XLT



**4** Black Vinyl/Leather LARIAT



**5** Baja Vinyl/Leather LARIAT

	Agate Black Metallic	Iconic Silver Metallic	Oxford White	Carbonized Gray Metallic	Race Red	Stone Gray Metallic	Antimatter Blue Metallic	Atlas Blue Metallic <sup>1</sup>	Rapid Red Metallic Tinted Clearcoat <sup>1,3</sup>	Star White Metallic Tri-coat <sup>3</sup>
<b>XL</b>	<b>1 2</b>	<b>1 2</b>	<b>1 2</b>	<b>1 2</b>	<b>1 2</b>	<b>1 2</b>	<b>1 2</b>	<b>1 2</b>		
<b>XLT</b>	<b>3</b>	<b>3</b>	<b>3</b>	<b>3</b>	<b>3</b>	<b>3</b>	<b>3</b>	<b>3</b>	<b>3</b>	
<b>LARIAT</b>	<b>4 5</b>	<b>4 5</b>	<b>4 5</b>	<b>4</b>	<b>4 5</b>	<b>4 5</b>	<b>4 5</b>	<b>4 5</b>	<b>4 5</b>	<b>4 5</b>

Colors are representative only. See your dealer for actual paint/trim options. **1.** Restrictions may apply. See your dealer for details. **2.** Inner rear wheels are steel. **3.** Additional charge.



# BACKED BY 600+ FORD COMMERCIAL VEHICLE CENTERS.



There's a standard of excellence at your local Ford Commercial Vehicle Center dealer, where our certified experts are focused on offering an exceptional sales, service and finance experience. After helping you spec your Chassis Cab truck, our knowledgeable staff will help ensure it's built to your requirements. We can also recommend finance solutions and help maximize your "up-time" after the sale with prompt, specialized service. You'll find extended hours and service discounts at our Service and Parts Department to help us keep the fastest-moving fleet parts in your area in stock.

Learn more at [fordcommercialvehiclecenter.com](http://fordcommercialvehiclecenter.com).



## INCREASE YOUR PRODUCTIVITY.

**FORDTELEMATICS™ ESSENTIALS<sup>1,2</sup>** is our complimentary software solution that has an intuitive, easy-to-read dashboard providing valuable insights about your fleet vehicles. To take advantage of this complimentary offer, sign up today at [fleetaccount.ford.com/customer-signup](http://fleetaccount.ford.com/customer-signup).

**AVAILABLE FORD TELEMATICS Fleet Management Software<sup>2,3</sup>** lets you monitor where your vehicles go, how they're used, how well they're running and more. These insights can give you more time to focus on the rest of your business. Or use available Ford Data Services™<sup>2,3</sup> to access data through your business system or other telematics service providers. We can help you get the data you need the way you prefer.

Learn more at [commercialsolutions.ford.com](http://commercialsolutions.ford.com).



**A. 110V/400W AC POWER OUTLET ON CENTER CONSOLE REAR**  
Standard on LARIAT™  
Available on XLT  
(SuperCab™/Crew Cab)

**B. 360-DEGREE DUAL BEACON LED WARNING STROBES<sup>4,5</sup>**  
Available on ALL TRIMS

**C. FLOOR LINERS**  
Available on XLT and LARIAT  
(SuperCab/Crew Cab)

**D. REAR VIEW CAMERA AND PREP KIT**  
Available on ALL TRIMS

SHOP THE COMPLETE COLLECTION

[accessories.ford.com](http://accessories.ford.com)

**Ford Credit®** Get the ride you want. Whether you plan to lease or buy, Ford Credit has the option that's right for you. Ask your Ford Dealer for details or visit us online at [ford.com/finance](http://ford.com/finance).

**Ford Insure.** Insurance that lets you earn discounts for safe driving, offering a maximum discount of 40% off your auto insurance. Ford Insure works with your 2022 Chassis Cab to gauge driving habits and calculate a discount based on how you drive. Visit [fordinsure.com](http://fordinsure.com) to learn more.

*American Road Services Company LLC (a Ford affiliate) is the licensed insurance agency offering Ford Insure and is underwritten by Nationwide Mutual Insurance Company and affiliates. Home Office: Columbus, OH. Ford Motor and Ford Credit are not insurance companies or agents. Subject to underwriting guidelines, review and approval. Details and availability varies; program criteria differ in California. Discounts do not apply to all coverage elements; actual savings vary by state, coverage selections, rating factors and policy changes.*

**Ford Licensed Accessories (FLA)** are warranted by the accessory manufacturer's warranty. FLA are designed and developed by the accessory manufacturer and have not been designed or tested to Ford Motor Company engineering requirements. Contact your Ford Dealer for details and/or a copy of all limited warranties.

**Ford Original Accessories.** They're warranted for whichever provides you the greatest benefit: 24 months/unlimited mileage, or the remainder of your Bumper-to-Bumper 3-year/36,000-mile (whichever comes first) New Vehicle Limited Warranty.

**Ford Protect™ Extended Service Plans.** Whether you purchase or lease your Ford vehicle, insist on genuine Ford Protect extended service plans. Ford Protect has a variety of plans to give you peace-of-mind protection whether you want vehicle component or maintenance coverage. Plus, they are fully backed by Ford and honored at all Ford dealerships in the U.S., Canada and Mexico. When you visit your dealer, insist on genuine Ford Protect extended service plans.

**New Vehicle Limited Warranty.** We want your Ford F-Series Super Duty® truck ownership experience to be the best it can be. Under this warranty, your new vehicle comes with 3-year/36,000-mile bumper-to-bumper coverage (whichever comes first), 5-year/60,000-mile Powertrain Warranty coverage (whichever comes first), 5-year/60,000-mile safety restraint coverage (whichever comes first), and 5-year/unlimited-mile corrosion perforation (aluminum panels do not require perforation) coverage (whichever comes first) – all with no deductible. The Ford 6.7L Power Stroke® diesel engine gets 5-year/100,000-mile warranty coverage (whichever comes first). Please ask your Ford Dealer for a copy of this limited warranty.

**Roadside Assistance.** Covers your vehicle for 5 years or 60,000 miles (whichever comes first), so you have the security of knowing that help may be only a phone call away should you run out of fuel, lock yourself out of the vehicle or need a winch back to a paved road, a battery jump start or towing. Your Ford Dealer can provide complete details on all of these advantages.

**1.** Available on Ford vehicles with embedded modem. Requires modem activation and agreement to digital terms and conditions. Complimentary access will exist for the life of the vehicle or the life of the product. **2.** Connected service and features, and access to vehicle data depend on subscription and compatible AT&T network availability. Evolving technology/cellular networks/vehicle capability may limit functionality and prevent operation of connected features. **3.** Available on vehicles with embedded modem or equipped with plug-in device (PID). Requires modem activation. Ford Telematics and Ford Data Services are subscription services subject to agreement to FSM terms and conditions. Subscription subject to monthly charge. Subject to OFAC and credit check for subscription eligibility. **4.** Ford Licensed Accessory. **5.** Check local laws for use.

Ford and Oval Device, 911 Assist, AdvanceTrac, AppLink, Built Ford Proud, Built Ford Tough, F-Series, Ford Co-Pilot360, Ford Credit, Ford Data Services, Ford Protect, Ford Telematics, FordPass, FordPass. Built to Keep You Moving., Intelligent Oil-Life Monitor, LARIAT, MyKey, Power Stroke, PowerScope, Roll Stability Control, RSC, Safety Canopy, SecuriCode, SecuriLock, SelectShift, SOS Post-Crash Alert System, Super Duty, SuperCab, SYNC, TorqShift, and related marks are trademarks of Ford Motor Company.

Apple CarPlay and iPhone are trademarks of Apple Inc., registered in the U.S. and other countries. BANG & OLUFSEN and B&O are registered trademarks of Bang & Olufsen Group. Licensed by Harman Becker Automotive Systems Manufacturing Kft. All rights reserved. Android and Android Auto are trademarks of Google LLC. HD Radio is a proprietary trademark of iBiquity Digital Corporation. SiriusXM and all related marks and logos are trademarks of Sirius XM Radio Inc.

Comparisons based on competitive models (Class 3-5 Chassis Cabs for F-350/F-450/F-550; Class 6-7 Chassis Cabs for F-600), publicly available information and Ford certification data at time of release. Vehicles may be shown with optional and aftermarket upfit equipment. Features may be offered only in combination with other options or subject to additional ordering requirements/limitations. Dimensions and capacity ratings shown may vary due to optional features and/or production variability. Information is provided on an "as is" basis and could include technical, typographical or other errors. Ford makes no warranties, representations, or guarantees of any kind, express or implied, including but not limited to, accuracy, currency, or completeness, the operation of the information, materials, content, availability, and products. Ford reserves the right to change product specifications, pricing and equipment at any time without incurring obligations. Your Ford Dealer is the best source of the most up-to-date information on Ford vehicles. Body manufacturers are responsible for compliance certification of the completed vehicle. The Ford New Vehicle Limited Warranty and any government certification made by Ford shall cover only the vehicle as manufactured by Ford and shall not extend to any addition, modification or change of or to the vehicle by the Ford Authorized Pool Account.



[ford.com/commercial-trucks/chassis-cab](http://ford.com/commercial-trucks/chassis-cab)





As your local Ford Dealer, we're proud to serve you now and in the future. From vehicle test-drives and product demonstrations to personalized service and maintenance, we're committed to delivering a Ford ownership experience above and beyond your expectations.

22FCOPDF

©2021 Ford Motor Company



## FordPass. Built to Keep You Moving.™

Meet FordPass™ The app that lets you access complimentary remote features including start/stop and lock/unlock,<sup>1</sup> monitor your fuel level and oil life,<sup>2</sup> and puts Rewards, Roadside Assistance<sup>3</sup> and more in the palm of your hand.



SCAN TO DOWNLOAD  
or visit [FordPass.com](https://fordpass.com)  
*Data rates may apply.*

1. Remote lock/unlock requires power door locks. 2. FordPass Connect, the FordPass App, and complimentary Connected Service are required for remote features (see FordPass Terms for details). Connected service and features depend on compatible AT&T network availability. Evolving technology/cellular networks/vehicle capability may limit functionality and prevent operation of connected features. Connected service excludes Wi-Fi hotspot. 3. Roadside Assistance is included for certain owners and available to everyone for a per-service fee. Ford reserves the right to change program details without obligations. Ford Roadside Assistance is a complimentary offering to all Ford owners for up to 5 years or 60,000 miles (from the date of sale), whichever comes first.

